

HRM4Baltics

All HRM and payroll tools in one solution

BI module

All information in one image

The HRM4Baltics BI solution is an additional module for the HRM4Baltics human resources management (HRM) and payroll solution.

The business intelligence (BI) solution is deployable through the HRM4Baltics software Extended package.

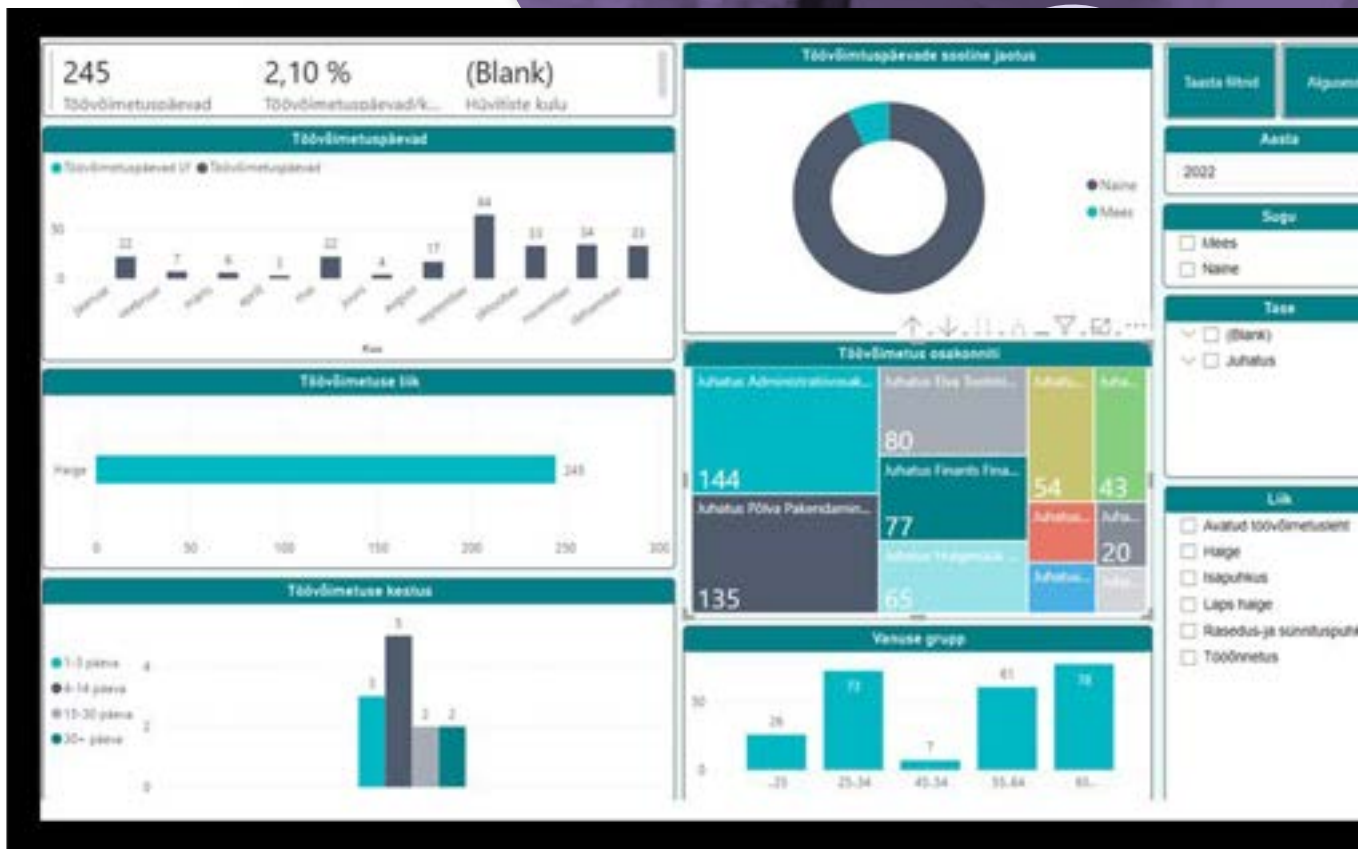
Module installation is quick and easy.

The BI data can be hosted either on the customer's own infrastructure or, if unavailable, on the BCS Itera HRM BI server.

PROVIDING STRUCTURES TO THE WORLD

Why?

- KPI dashboards for payroll and HR data
- Up-to-date information on company structure and teams
- Labour mobility statistics help identify and prevent problems in teams
- New employee statistics from the company's onboarding process
- An overview of absences by age group, periods with the highest instances of incapacity for work, quantification of hours and financial losses incurred by the company during the virus season
- Wage statistics on labour costs and remuneration by different dimensions and types of remuneration



REPORTS

HRM analytics functionality

- Company overview
- Structure
- Diversity
- New employees
- Employee departures (incl reasons for leaving)
- Staff turnover (incl departures during probationary period)
- Absences
- Incapacity for work
- Amount of remuneration and labour costs
- Remuneration by structural unit
- Working time calculation

ADVANTAGES OF THE SOLUTION

- Visualised overview of company payroll and HR data
- Option to display data on a timeline
- Immediately usable, adaptable to customer needs
- Database can be hosted on the BCS Itera HRM BI server to which the Power BI Premium users of the customer connect

